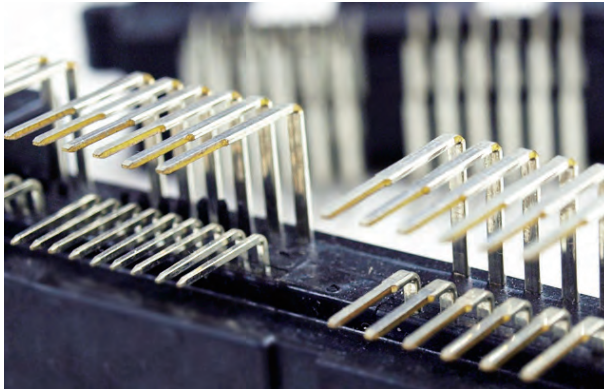


WATANABE MFG Co., LTD.



There also experience lots of insert molding

Main Services

Manufacturing of trial parts and trial models

Main Clients

Manufacturers of OA equipment and automotive parts

Main Products

Resin cutting products, injection molded products, additive manufacturing products, aluminum cutting products

Company overview

Address / 3-7-6 Meishinguchi, Toyonaka city, Osaka 561-0841

Tel / +81-6-6332-9881 Fax / +81-6-6332-9886

Foundation / May 1975 Establishment / Jan 1983

Capital / JPY 10 million Employees / 58

Manufacturing of trial products

Supporting development sites of automotive and OA equipment by trial products manufacturing

Strength

Proposal-based business development such supplying mass-production know-how

For works, there are 2 kinds, working model mainly for shape measurement, functionality assessment and endurance test, and design model which prioritized appearance, designability and texture for exhibitions. They're highly evaluated from their clients for both texture and accuracy of working model and finishing of design model. For trial products manufacturing,

sometime there is only conception pictures when it's ordered. Also, there are clients which isn't familiar with mass-production technology with dies. Nevertheless, they're selected as they develop "proposal-based business" like supporting clients' drawing and advancing the way to not make inferior goods at mass-production. This leads to be supported by clients. "From now on, we'd like to expand proposal-based business, not only just trial products manufacturing.", the managing director Yuichi Watanabe who is a son of president Watanabe expresses a willingness.

Direct tradeable

<https://www.m-osaka.com/en/takumi/15052>